

## We visualize your PV installation on a display!



### Product description

Solarview UNI is a compact computer pre-installed with a customized variant of Linux that is optimized for continuous operation 24/7. It connects to our interface based on API calls. Comes with a pre-installed memory card, HDMI cable and is powered with the supplied power adapter via USB-C.

### Use

Easy to get started, connect the HDMI cable to the display, the network cable, the AC adapter and boot up. The device is delivered activated and automatically connects to the PV plant you selected when placing your order. In the future, an activation step will be added where activation takes place via a QR code.

### Compatibility

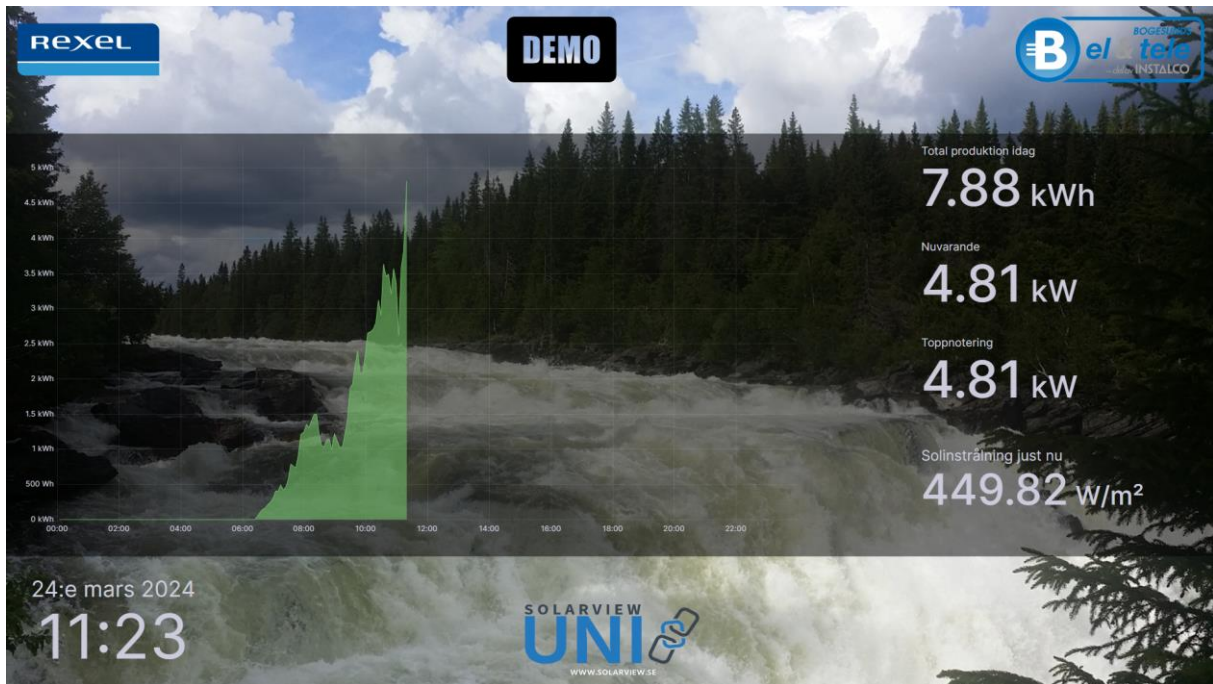
Fully compatible with Ferroamp, Huawei and Solaredge.

### The interface

An interface that is continuously optimized and developed with new functions. Connects fully automatically, updates itself when needed and downloads the PV plants visualization without any hassle. Our goal is to integrate all common manufacturers on the Nordic market.

### Own servers

All operation, maintenance, development and backups take place on our own servers located in Sweden with full redundancy.



## Functions

- Installer's logo.
- The end customer's logo.
- Own optional background.
- Address or name of the PV plant.
- Message / advertising.
- Daily.
- Week.
- Month.
- Year.
- Total.
- Last 7 days.
- Yesterday.
- History.
- Savings in the number of trees.
- Number of miles with an electric car.
- CO<sub>2</sub> savings.
- Solar radiation.

Displays the installer's logo, the end customer's logo and a custom background of your choice. Rotates daily, week, last 7, yesterday, month, year, total or as desired. Several plants can be visualized and rotated in the same unit if you have more sites. Among other things, solar radiation, number of miles driven by an electric car, savings in the number of trees and CO<sub>2</sub> savings can be calculated. The view can be adjusted for the entire period, e.g. 00:00 – 23:59 or to "right now", which fills in the graph continuously during the day.

## Subscription year two and onwards

The first year always includes operation, maintenance and backups when purchasing Solarview UNI. For access to a simple and clear overview of your connected PV plants with continued operation, maintenance and backups, we charge a small fee in year two and onwards. The cost is based on a basic fee where one PV plant is included, then a smaller amount is added per extra PV plant. You can then easily overview this cost and invoice your end customer if desired, or if the opportunity to be seen on the display at your customers outweighs it.

## Calculation Example

9.60 GBP + 5.40 GBP with 5 connected PV plants, total 15.00 GBP/month.  
(9.60 GBP/month as base fee then 1.35 GBP/month per extra PV plant).